

Developmental Courses - Grade Distributions - 2007-2008 Academic Year

Enrollments and Grade Distributions - 2007 Fall, 2008 Spring, 2008 Summer, 2008 Fall (repeats only)											
First Outcomes											
ENG013 Basic Writing	A	B	C	D	F	W	Total	%ABC	%ABCDF	GPA*	
Final Grades	22	32	28	21	65	28	196	41.84%	85.71%	1.55	
ENG101 Elements of Writing	A	B	C	D	F	W	Total	%ABC	%ABCDF	GPA*	
Final Grades	105	121	106	35	114	60	541	61.37%	88.91%	2.14	
RDG039 College Prep Reading II	A	B	C	D	F	W	Total	%ABC	%ABCDF	GPA*	
Final Grades	8	28	23	10	55	27	151	39.07%	82.12%	1.39	
MAT041 Basic Math	A	B	C	D	F	W	Total	%ABC	%ABCDF	GPA*	
Final Grades	64	66	58	26	69	45	328	57.32%	86.28%	2.11	
MAT052 Pre Algebra	A	B	C	D	F	W	Total	%ABC	%ABCDF	GPA*	
Final Grades	53	94	86	19	44	32	328	71.04%	90.24%	2.31	
MAT062 Elementary Algebra	A	B	C	D	F	W	Total	%ABC	%ABCDF	GPA*	
Final Grades	118	148	141	43	115	46	611	66.61%	92.47%	2.20	
MAT101/2 Int Alg; MAT072 Elem Alg II	A	B	C	D	F	W	Total	%ABC	%ABCDF	GPA*	
Final Grades	98	100	116	48	126	99	587	53.49%	83.13%	1.99	
<i>*GPA scores only based on A-F grades</i>											

Enrollments and Grade Distributions - 2006 Fall, 2007 Spring, 2007 Summer, 2007 Fall (repeats only)											
Best Outcomes											
ENG013 Basic Writing	A	B	C	D	F	W	Total	%ABC	%ABCDF	GPA*	
Final Grades	23	34	33	22	60	24	196	45.92%	87.76%	1.64	
ENG101 Elements of Writing	A	B	C	D	F	W	Total	%ABC	%ABCDF	GPA*	
Final Grades	105	126	114	37	109	50	541	63.77%	90.76%	2.16	
RDG039 College Prep Reading II	A	B	C	D	F	W	Total	%ABC	%ABCDF	GPA*	
Final Grades	8	28	24	10	56	25	151	39.74%	83.44%	1.38	
MAT041 Basic Math	A	B	C	D	F	W	Total	%ABC	%ABCDF	GPA*	
Final Grades	66	71	66	17	67	41	328	61.89%	87.50%	2.18	
MAT052 Pre Algebra	A	B	C	D	F	W	Total	%ABC	%ABCDF	GPA*	
Final Grades	55	98	92	17	43	23	328	74.70%	92.99%	2.34	
MAT062 Elementary Algebra	A	B	C	D	F	W	Total	%ABC	%ABCDF	GPA*	
Final Grades	124	166	168	29	92	32	611	74.96%	94.76%	2.35	
MAT101/2 Int Alg; MAT072 Elem Alg II	A	B	C	D	F	W	Total	%ABC	%ABCDF	GPA*	
Final Grades	104	111	142	45	116	69	587	60.82%	88.25%	2.08	
<i>*GPA scores only based on A-F grades</i>											

ENG 013 Basic Writing - Next Level Enrollments¹

	A	B	C	D	F	W	Total
BestOutcomes ENG013	23	34	33	22	60	24	196
ENG-101 # Enrolled	16	24	19	11	4	1	75
ENG-101 #ABC	13	18	13	7	2	1	54
ENG-101 %ABC	81.3%	75.0%	68.4%	63.6%	50.0%	100.0%	72.0%
ENG-101 GPA*	3.5	2.6	1.9	1.7	1.7	2.0	2.4
ENG-105 # Enrolled	11	12	5	4	2		34
ENG-105 #ABC	7	9	3	2	1		22
ENG-105 %ABC	63.6%	75.0%	60.0%	50.0%	50.0%		64.7%
ENG-105 GPA*	2.8	2.2	3.0	1.5	2.0		2.4
Arts Sci # Enrolled	74	134	103	39	56	11	417
Arts Sci #ABC	55	94	56	22	9	0	236
Arts Sci %ABC	74.3%	70.1%	54.4%	56.4%	16.1%	0.0%	56.6%
Arts Sci GPA*	2.9	2.6	1.8	1.9	0.7	0.2	2.1

ENG 101 Elements of Writing - Next Level Enrollments¹

	A	B	C	D	F	W	Total
Best Outcomes ENG101	105	126	114	37	109	50	541
ENG-105 # Enrolled	78	90	82	18	11	3	282
ENG-105 #ABC	65	59	44	6	0	0	174
ENG-105 %ABC	83.3%	65.6%	53.7%	33.3%	0.0%	0.0%	61.7%
ENG-105 GPA*	2.9	2.4	1.8	1.1			2.2
ENG-106 # Enrolled	24	11	18	4			57
ENG-106 #ABC	19	7	14	3			43
ENG-106 %ABC	79.2%	63.6%	77.8%	75.0%			75.4%
ENG-106 GPA*	2.9	2.3	2.7	2.0			2.7
Arts Sci # Enrolled	466	407	401	121	162	57	1614
Arts Sci #ABC	376	289	248	52	53	23	1041
Arts Sci %ABC	80.7%	71.0%	61.8%	43.0%	32.7%	40.4%	64.5%
Arts Sci GPA*	2.8	2.5	2.1	1.7	1.0	2.2	2.3

RDG 039 College Preparatory Reading II - Next Level Enrollments¹

	A	B	C	D	F	W	Total
Best Outcomes RDG039	8	28	24	10	56	25	151
Arts Sci # Enrolled	72	163	121	44	113	27	540
Arts Sci #ABC	67	109	69	21	43	14	323
Arts Sci %ABC	93.1%	66.9%	57.0%	47.7%	38.1%	51.9%	59.8%
Arts Sci GPA*	3.5	2.4	2.2	2.0	1.3	2.2	2.3

¹ Next level enrollments - occurring subsequently to best outcomes earned in 2007 fall, 2008 spring, 2008 summer

*GPAs based on A-F grades

Developmental Study - 2007-08 Academic Year

MAT 041 Basic Math¹

	A	B	C	D	F	W	Total
Best Outcomes MAT041	66	71	66	17	67	41	328
MAT-052 # Enrolled	25	25	24			1	75
MAT-052 #ABC	18	19	9			0	46
MAT-052 %ABC	72.0%	76.0%	37.5%			0.0%	61.3%
MAT-052 GPA*	3.2	2.5	1.4				2.4
MAT-062 # Enrolled	27	33	20		1	1	82
MAT-062 #ABC	18	22	10		0	0	50
MAT-062 %ABC	66.7%	66.7%	50.0%		0.0%	0.0%	61.0%
MAT-062 GPA*	2.7	2.3	1.6		0.0	1.0	2.2
Arts Sci # Enrolled	214	306	220	50	47	41	878
Arts Sci #ABC	158	202	112	30	13	17	532
Arts Sci %ABC	73.8%	66.0%	50.9%	60.0%	27.7%	41.5%	60.6%
Arts Sci GPA*	2.9	2.6	1.9	2.1	0.9	1.8	2.3

MAT 052 Pre Algebra Math¹

	A	B	C	D	F	W	Total
Best Outcomes MAT052	55	98	92	17	43	23	328
MAT-062 # Enrolled	25	55	62	3			145
MAT-062 #ABC	19	43	30	0			92
MAT-062 %ABC	76.0%	78.2%	48.4%	0.0%			63.4%
MAT-062 GPA*	3.0	2.5	1.5	1			2.2
MAT-101/102/072 # Enrolled	28	33	30				91
MAT-101/102/072 #ABC	21	21	9				51
MAT-101/102/072 %ABC	75.0%	63.6%	30.0%				56.0%
MAT-101/102/072 GPA*	2.7	2.0	1.0				2.0
Arts Sci # Enrolled	265	411	401	38	75	28	1218
Arts Sci #ABC	203	265	247	14	21	11	761
Arts Sci %ABC	76.6%	64.5%	61.6%	36.8%	28.0%	39.3%	62.5%
Arts Sci GPA*	2.8	2.7	2.2	1.5	1.0	1.9	2.4

¹ Next level enrollments - occurring subsequently to best outcomes earned in 2007 fall, 2008 spring, 2008 summer

*GPAs based on A-F grades

Developmental Study - 2007-08 Academic Year

MAT 062 Elementary Algebra¹

	A	B	C	D	F	W	Total
Best Outcomes MAT062	124	166	168	29	92	32	611
MAT-101/101/072 # Enrolled	47	67	71	2	2		189
MAT-101/102/072 #ABC	34	37	27	0	1		99
MAT-101/102/072 %ABC	72.3%	55.2%	38.0%	0.0%	50.0%		52.4%
MAT-101/102/072 GPA*	2.6	1.9	1.4		1.0		1.9
Arts Sci # Enrolled	525	762	635	72	163	37	2194
Arts Sci #ABC	435	523	426	38	57	19	1498
Arts Sci %ABC	82.9%	68.6%	67.1%	52.8%	35.0%	51.4%	68.3%
Arts Sci GPA*	3.2	2.6	2.4	1.7	1.4	2.4	2.6

MAT 101/102 Intermediate Algebra; MAT 072 Elementary Algebra II¹

	A	B	C	D	F	W	Total
Best Outcomes MAT101/102	104	111	142	45	116	69	587
MAT-110 # Enrolled	1		1				2
MAT-110 #ABC	1		1				2
MAT-110 %ABC	100.0%		100.0%				100.0%
MAT-117 # Enrolled		1					1
MAT-117 #ABC		1					1
MAT-117 %ABC		100.0%					100.0%
MAT-120 # Enrolled	26	29	29				84
MAT-120 #ABC	22	20	18				60
MAT-120 %ABC	84.6%	69.0%	62.1%				71.4%
MAT-121 # Enrolled	5	4	13		1		23
MAT-121 #ABC	5	1	6		0		12
MAT-121 %ABC	100.0%	25.0%	46.2%		0.0%		52.2%
MAT-129 # Enrolled	7	4	1				12
MAT-129 #ABC	3	2	1				6
MAT-129 %ABC	42.9%	50.0%	100.0%				50.0%
MAT-130 # Enrolled	4	2	4				10
MAT-130 #ABC	3	2	2				7
MAT-130 %ABC	75.0%	100.0%	50.0%				70.0%
MAT-140 # Enrolled	1	3	1	1			6
MAT-140 #ABC	1	2	0	0			3
MAT-140 %ABC	100.0%	66.7%	0.0%	0.0%			50.0%
MAT-156 # Enrolled	14	14	5	5	2	6	46
MAT-156 #ABC	13	7	3	1	1	1	26
MAT-156 %ABC	92.9%	50.0%	60.0%	20.0%	50.0%	16.7%	56.5%

¹ Next level enrollments - occurring subsequently to best outcomes earned in 2007 fall, 2008 spring, 2008 summer

*GPAs based on A-F grades

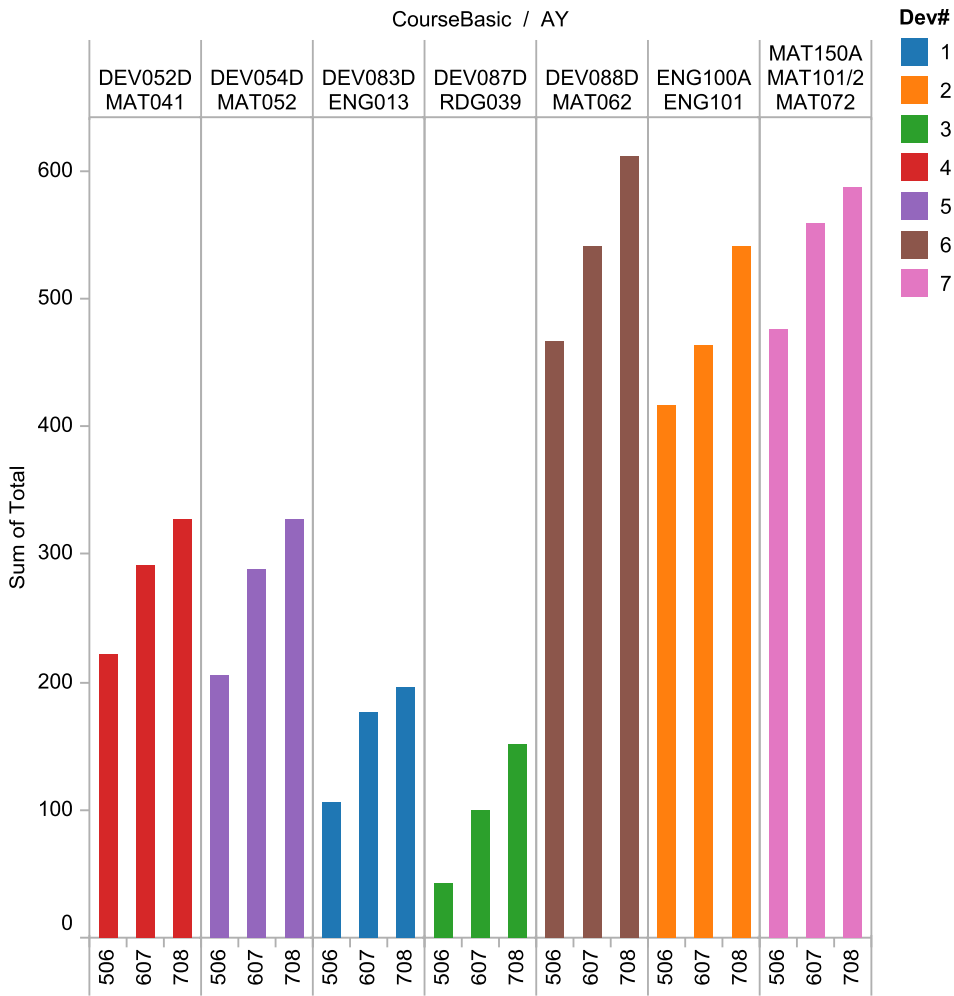
Developmental Study - 2007-08 Academic Year

MAT-157 # Enrolled	11	13	21	4	5	3	57
MAT-157 #ABC	9	10	11	3	2	2	37
MAT-157 %ABC	81.8%	76.9%	52.4%	75.0%	40.0%	66.7%	64.9%
Arts Sci # Enrolled	518	473	615	182	263	178	2229
Arts Sci #ABC	461	381	447	112	96	100	1597
Arts Sci %ABC	89.0%	80.5%	72.7%	61.5%	36.5%	56.2%	71.6%
Arts Sci GPA*	3.3	2.9	2.6	2.2	1.3	2.1	2.7

¹ Next level enrollments - occurring subsequently to best outcomes earned in 2007 fall, 2008 spring, 2008 summer
 *GPAs based on A-F grades

Developmental Study - 2007-08 Academic Year

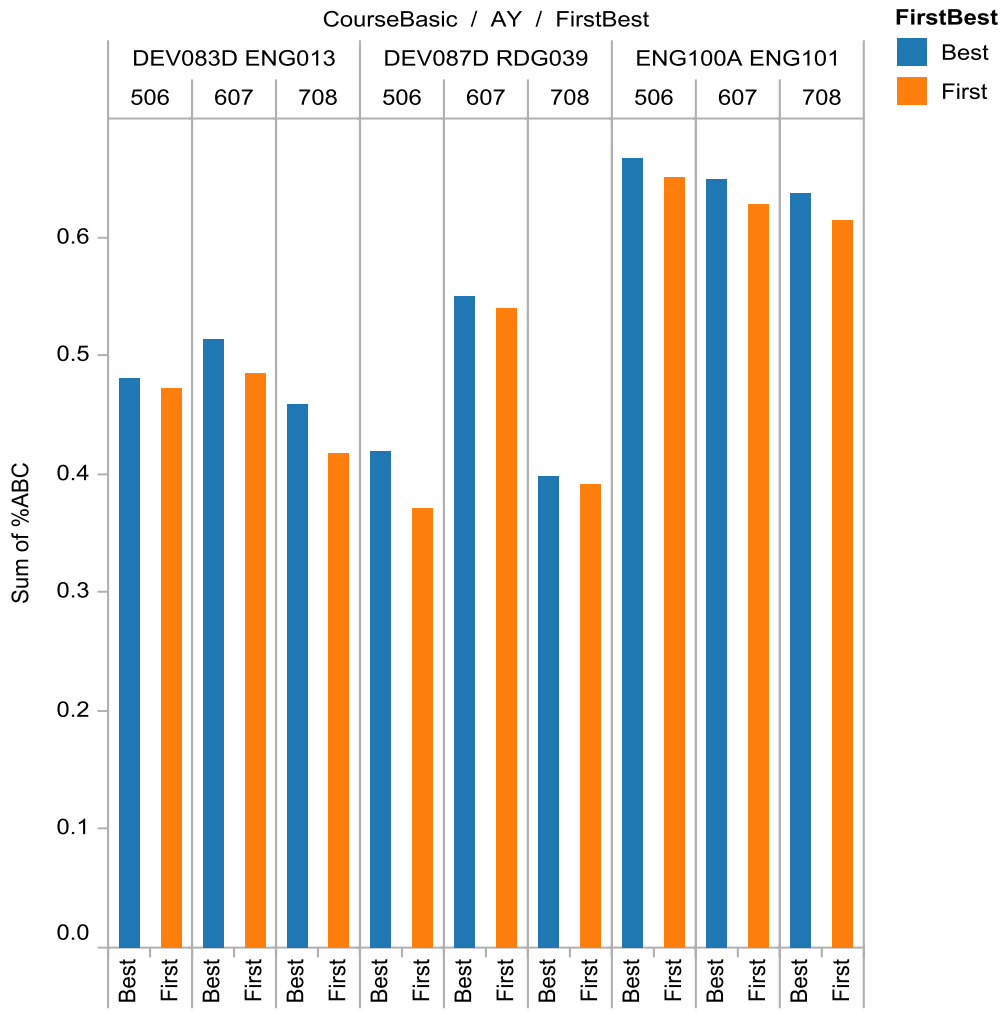
All Enrollments 0506 0607 0708



Sum of Total for each AY broken down by CourseBasic. Color shows details about Dev#. The data is filtered on FirstBest, which keeps First.

Developmental Study - 2007-08 Academic Year

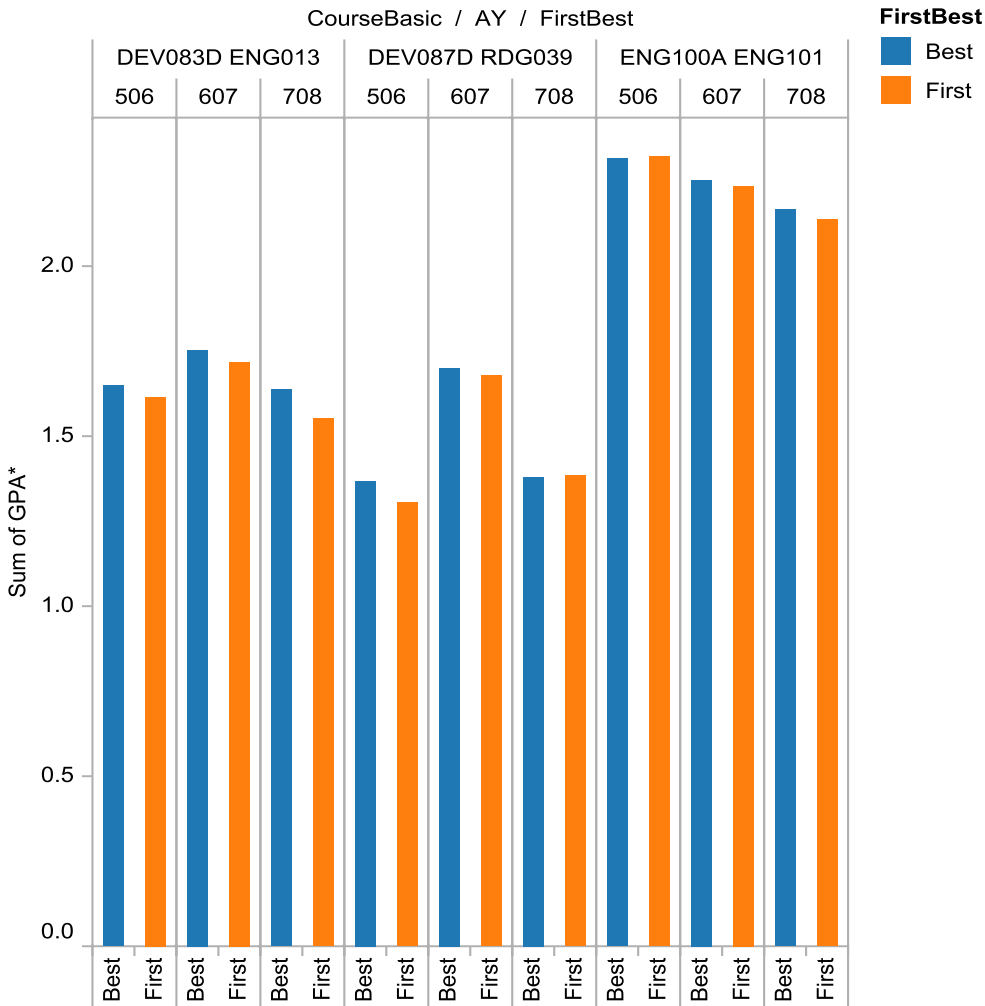
%ABC Reading & English - 0506 - 0708



Sum of %ABC for each FirstBest broken down by CourseBasic and AY. Color shows details about FirstBest. The data is filtered on Dev#, which keeps 1, 2 and 3.

Developmental Study - 2007-08 Academic Year

GPA's Reading & English - 0506 - 0708



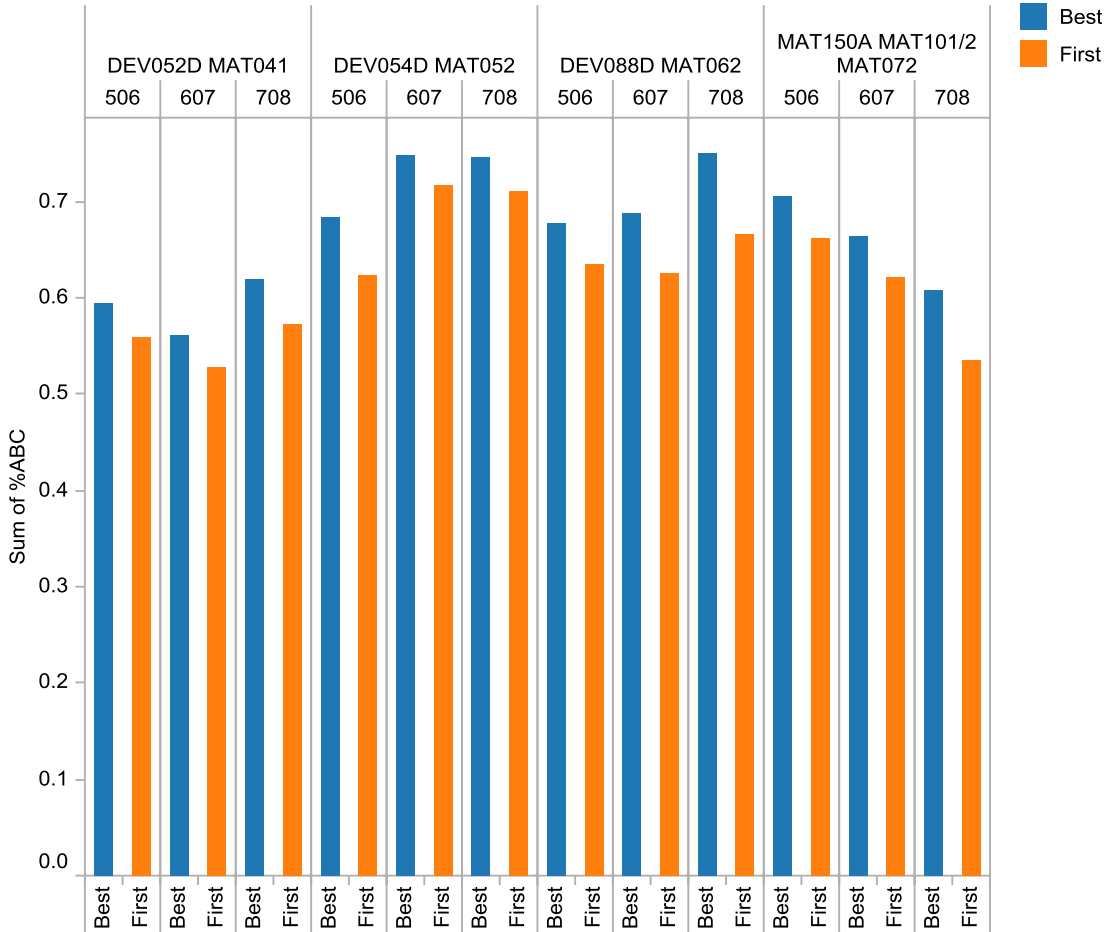
Sum of GPA* for each FirstBest broken down by CourseBasic and AY. Color shows details about FirstBest. The data is filtered on Dev#, which keeps 1, 2 and 3.

Developmental Study - 2007-08 Academic Year

%ABC Math - 0506 - 0708

CourseBasic / AY / FirstBest

FirstBest

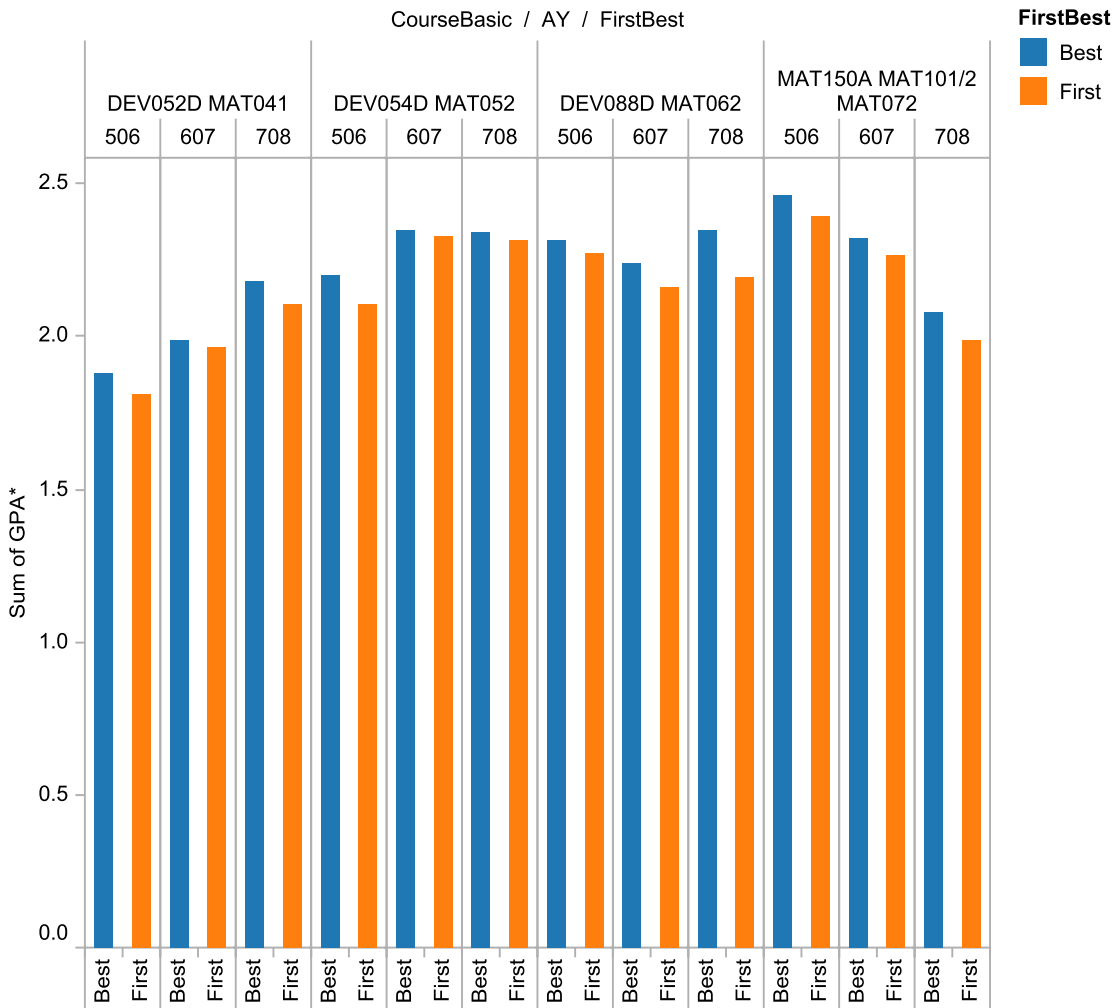


Sum of %ABC for each FirstBest broken down by CourseBasic and AY. Color shows details about FirstBest. The data is filtered on Dev#, which has multiple members selected.

Developmental Study - 2007-08 Academic Year

GPA Math - 0506 - 0708

CourseBasic / AY / FirstBest



Sum of GPA* for each FirstBest broken down by CourseBasic and AY. Color shows details about FirstBest. The data is filtered on Dev#, which has multiple members selected.