

## Training the Workforce that Drives Our Future

Iowa Western Community College has established itself as a leader in career and technical education and is committed to meeting the growing demand for skilled professionals in the critical industries of transportation and logistics. To further this mission, Iowa Western has plans for the construction of a new Transportation Building on the Council Bluffs campus to house Diesel and Automotive Technology programs, CDL and a new Logistics program. This investment will expand the college's capacity to train the next generation of skilled workers, addressing urgent workforce needs across Iowa, Nebraska, and the Midwest.

Fueled by shifting consumer demands and e-commerce, the national supply chain is experiencing unprecedented growth and an increased need for efficient freight delivery systems. However, the transportation industry faces significant challenges in maintaining an adequate workforce, particularly in areas like truck driving, automotive and diesel technology, and logistics management.

The new 86,000-square-foot Transportation Building will be a state-of-the-art facility designed to significantly expand the College's ability to provide quality, hands-on training for students and address the critical labor needs of regional employers.

### Expand Capacity

Larger facility allows for nearly double the number of students.

### Enhance Industry Training

Modern labs enable students to work with industry-standard equipment and technologies, preparing them for immediate employment.

### Collaborative Learning

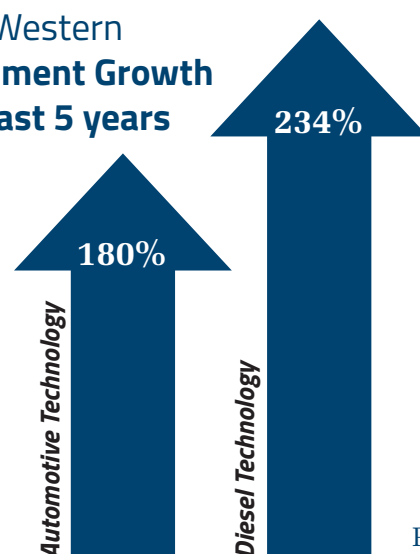
Integrating Diesel, Automotive, CDL, and Logistics under one roof, creates a collaborative experience that mirrors real-world industry operations.

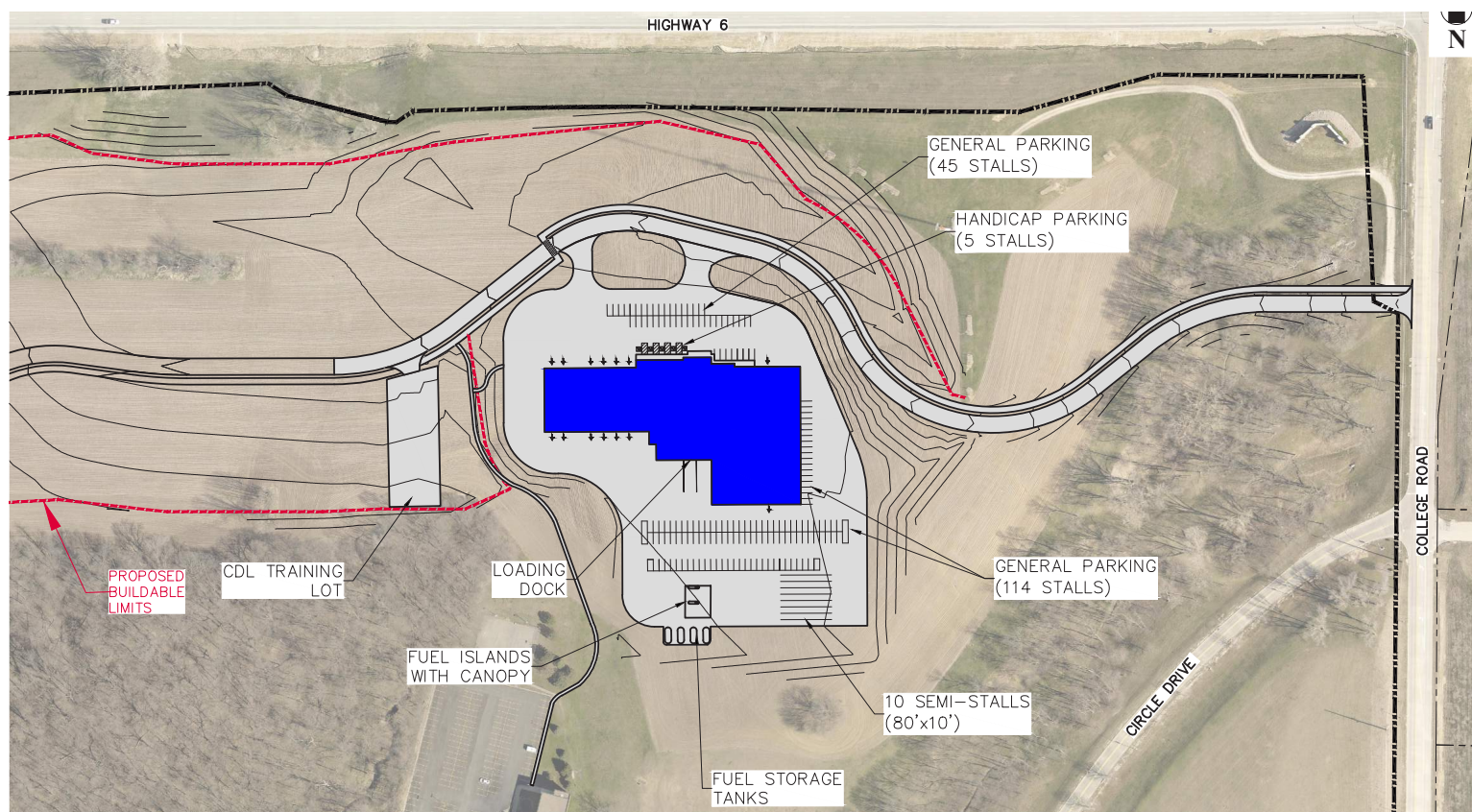
### Support Dual-Credit High School Programs

Gains high school students early exposure, fosters interest and reduces time to enter the workforce.



Iowa Western  
**Enrollment Growth**  
over last 5 years



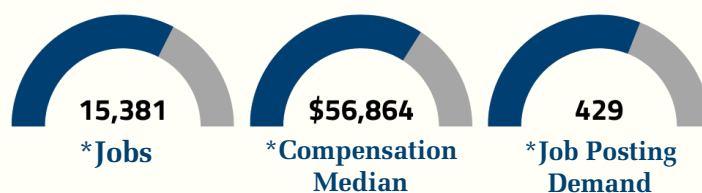


## Quick Facts

- Transportation and logistics impacts every business and household in the United States.
- The Council Bluffs/Omaha metro area is uniquely positioned at the intersection of I-80 and I-29 and freight delivery is predicted to increase by 108% in Nebraska and 97% in Iowa by the year 2050.
- Labor market data reveal an overwhelming and seemingly permanent demand for heavy and tractor truck drivers and mechanics, especially diesel mechanics.
- The national shortage of truck drivers is anticipated to reach 160,000 by 2030 and the Midwest region is expected to experience a significant job growth above the national rate.

## Omaha/Council Bluffs Labor Data

Heavy Tractor-Trailer Drivers, Automotive Technicians and Diesel Technicians:



\* Metro area numbers exceed national numbers for comparable areas.

Iowa Western Community College's vision is to build a stronger future by investing in our students, our programs, and our facilities.

Together, we can ensure that Southwest Iowa and the Omaha metro remain national leaders in transportation, logistics, and technical training; driving economic growth and opportunity for generations to come.